



AC1350 Wireless Dual Band Router

Upgrade for Faster AC Wi-Fi to Every Device



Archer C59



450Mbps + 867Mbps
Dual Band Wi-Fi



MU-MIMO Technology for
2× Faster Performance



Beamforming Technology
for Better Coverage

Highlights

Household Wi-Fi at Streaming Speeds

Press play and forget about buffering with the Archer C59. The strong 2.4GHz (450Mbps) Wi-Fi band is perfect for sending emails, browsing the web, and listening to music. The router's 5GHz band reaches 867Mbps so you can game online and stream in HD simultaneously. Thanks to dual Wi-Fi bands, you can run more of your devices at the same time without interruption.

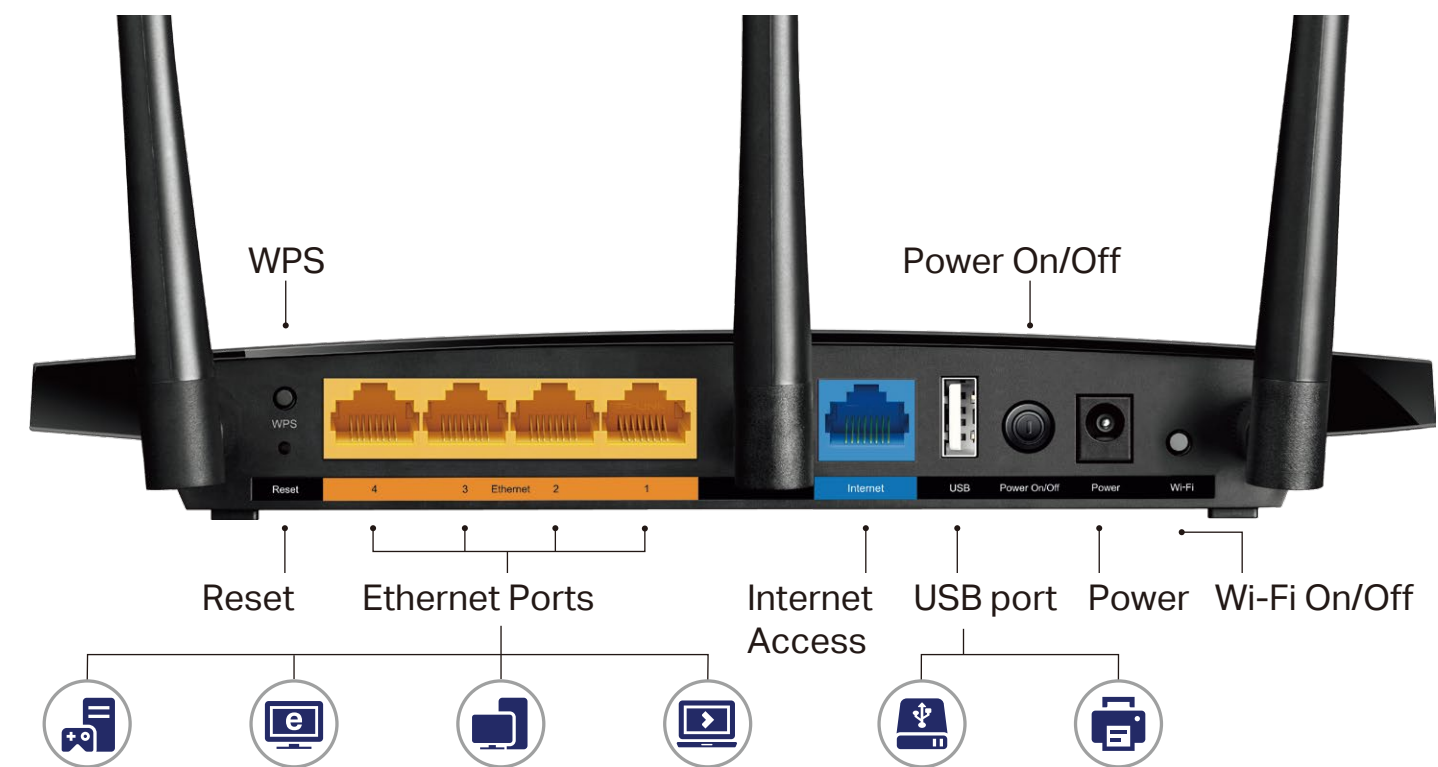
📶 2.4GHz 450Mbps

📶 5GHz 867Mbps



Fast Ethernet

Enjoy fast, reliable wired connections for gaming and streaming in the best quality



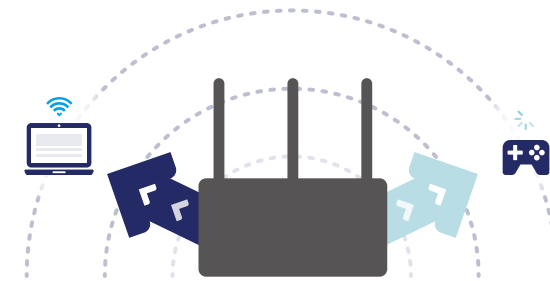
Highlights

MU-MIMO for 2× Faster Connections

MU-MIMO technology allows the Archer C59 to serve 2 devices at once, reducing wait time and increasing Wi-Fi throughput.



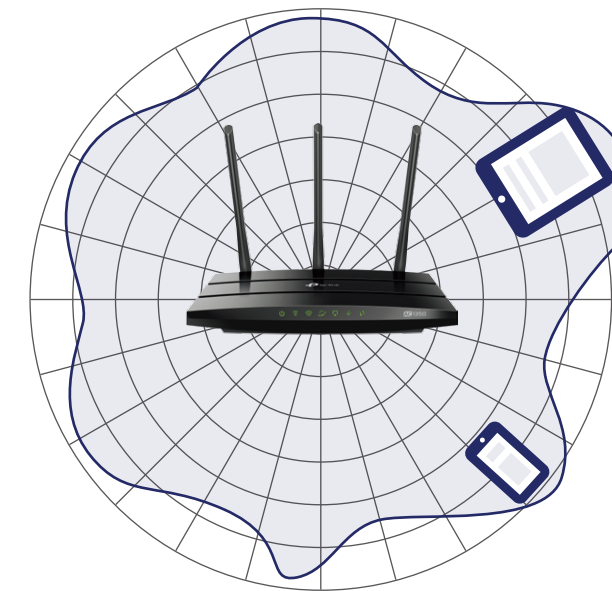
MU-MIMO Router
Simultaneously sends data to multiple devices



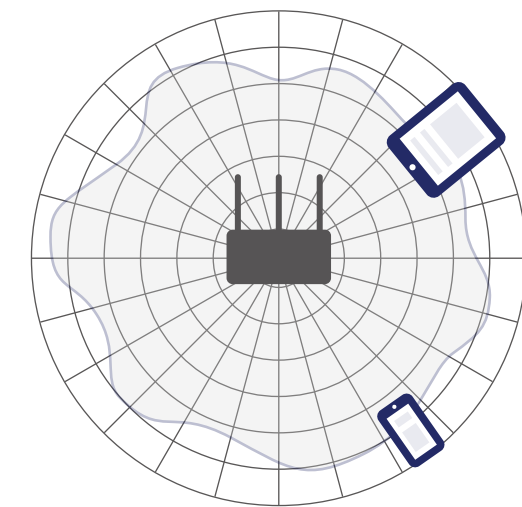
Traditional Router
Sends data to one device at a time

Beamforming for Better Coverage

Beamforming technology detects the location of your connected devices and concentrates the Archer C59's Wi-Fi towards them to create stronger overall connections.



Archer C59



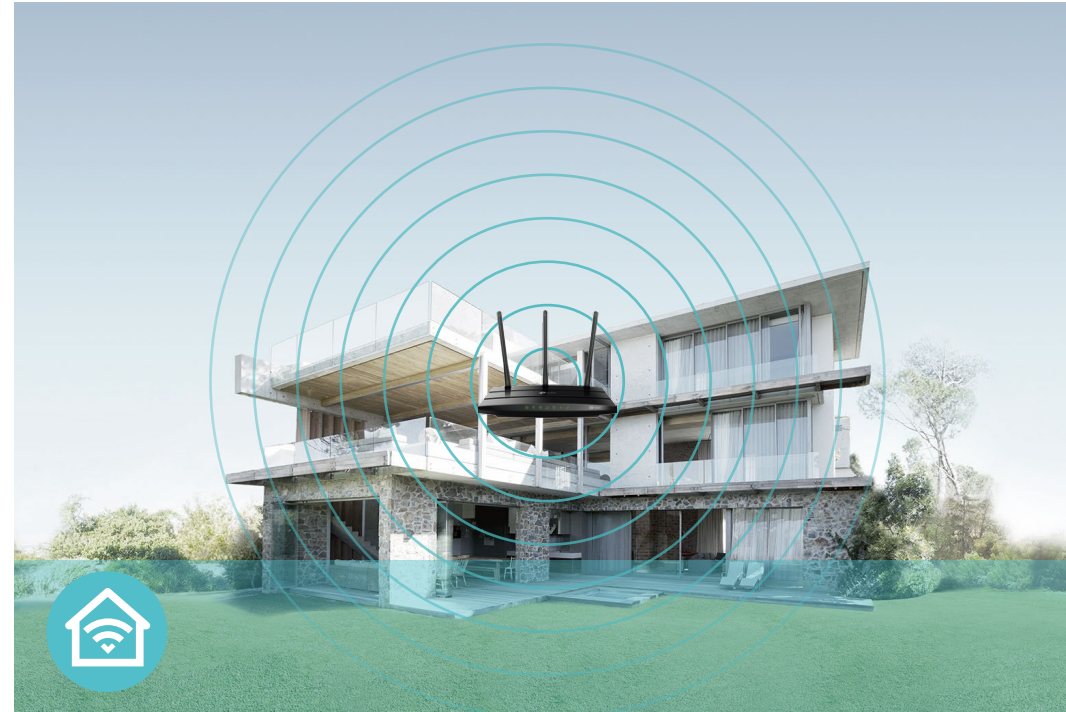
Regular Router

Features



Speed

- **Ultimate Wireless Speed** – Combined wireless speeds up to 450 (over 2.4GHz) and 867 (over 5GHz) Mbps
- **MU-MIMO Technology** – Simultaneously exchanges data with several devices, achieving speeds which are 2x faster than standard AC routers
- **Support 802.11 ac** – Provides a data transfer rate 3 times faster than 802.11n for each stream



Wi-Fi Range

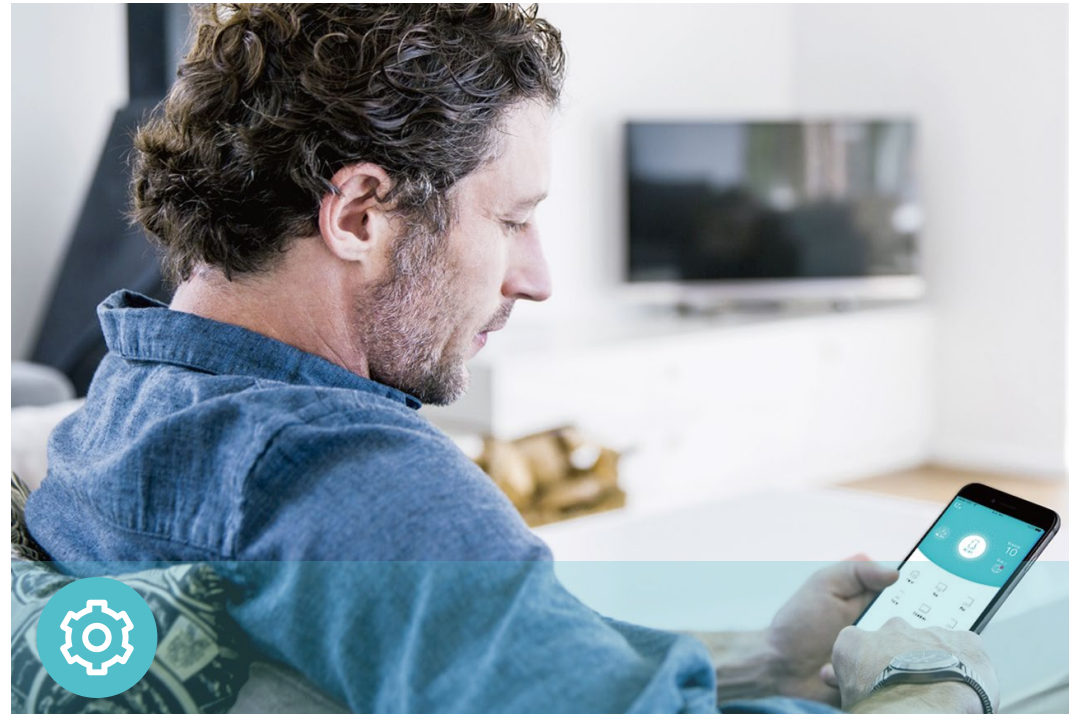
- **Ultimate Range Wi-Fi** – 3 dual band high-performance antennas with a high-powered amplifier ensure the widespread Wi-Fi coverage and a stable connection
- **Wi-Fi with Beamforming** – Beamforming technology locates the connected devices and further improves the Archer C59's range and the signal strength to each mobile device, delivering a more reliable and efficient wireless connection



Reliability

- **Simultaneous Dual Band** – Separate Wi-Fi bands enable more devices to connect to your network without a drop in performance
- **Easy Bandwidth Management** – Advanced QoS makes it easier for you to manage the bandwidth of connected devices

Features



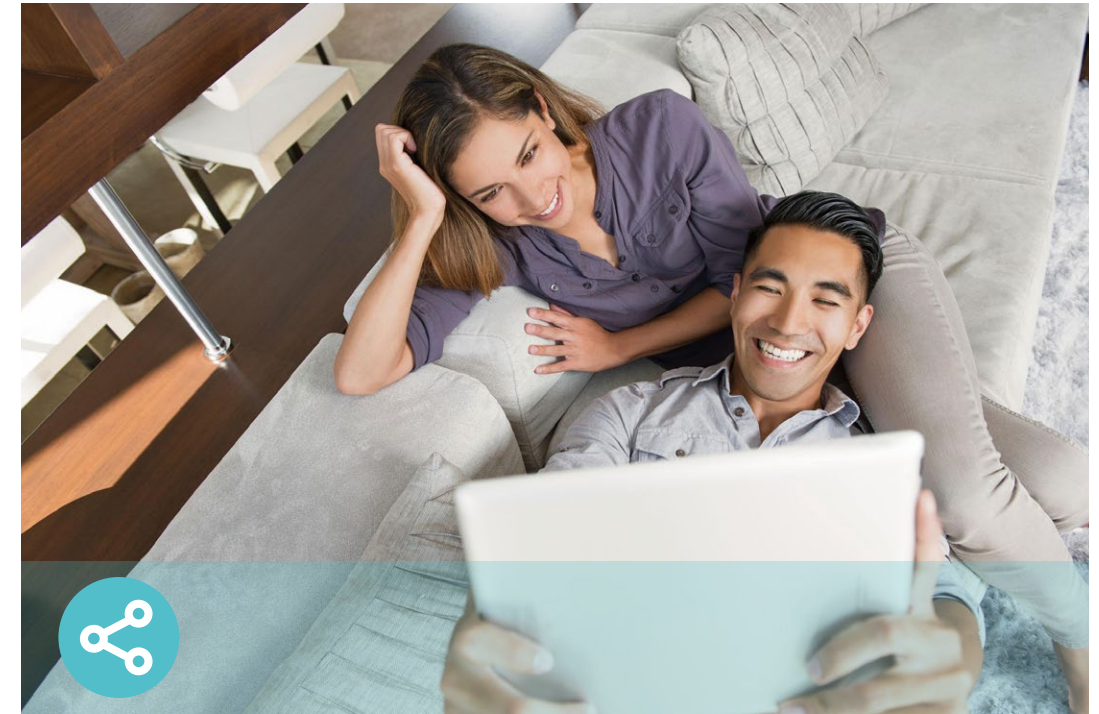
Ease of Use

- Intuitive Web UI – Ensures quick and simple Installation without hassle
- Fast Encryption – One-touch WPA wireless security encryption with the WPS button
- Wi-Fi On/Off – Turn on/off wireless radio as needed using the Wi-Fi On/Off button
- Power On/Off – Conveniently power on or off your router as required
- Hassle-free Management with Tether App – Network management is made easy with the TP-Link Tether App, available on any Android and iOS device



Security

- Guest Network – Keep your main network secure by creating a separate network for friends and visitors
- Access Control – Establish a whitelist or blacklist to allow or restrict certain devices to access the internet
- Parental Controls – Restrict internet access time and contents for children devices
- VPN Server – PPTP VPN and OpenVPN are supported, making it easy to set up a secure connection between your private network and the internet
- Encryptions for Secure Network – WPA-PSK and WPA2-PSK encryptions provide active protection against security threats



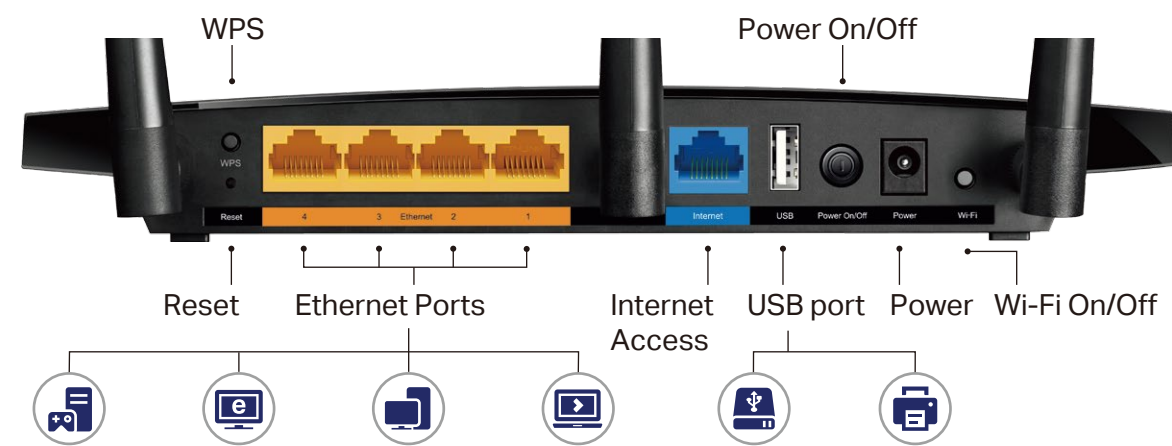
Easy Sharing

- USB Port for Fast Sharing – With the USB port, you can access and share a printer as well as your files and media locally. Through the router's FTP server, you can also access your files and media from network devices remotely
- Built-in Print Server – Allows wireless printing from multiple computers (works in conjunction with a USB printer)
- Built-in Media Server – Allows you to play music, watch videos and view photos from any device on your network

Specifications

Hardware

- Ethernet Ports: 4 10/100Mbps LAN Ports, 1 10/100Mbps WAN Port
- USB Ports: 1 USB 2.0 Port
- Buttons: Wi-Fi Button, Power On/Off Button, Reset Button, WPS Button
- Antennas: 3 Fixed Omni Directional Antennas
- External Power Supply: 12VDC/1A (EU version), 12VDC/1.5A (US version)
- Dimensions (W x D x H): 8.9 × 5.8 × 1.3 in (225 × 148 × 33 mm)



Wireless

- Wireless Standards: IEEE 802.11ac/n/a 5GHz, IEEE 802.11b/g/n 2.4GHz
- Frequency: 2.4GHz and 5GHz
- Signal Rate: 867Mbps at 5GHz, 450Mbps at 2.4GHz
- Transmit Power:
 - CE: <20dBm (2.4GHz), <23dBm (5GHz)
 - FCC: <30dBm (2.4GHz & 5GHz)
- Reception Sensitivity:
 - 5GHz:
 - 11a 6Mbps: -94dBm, 11a 54Mbps: -76dBm
 - 11ac HT20: -68dBm, 11ac HT40: -64dBm, 11ac HT80: -60dBm
 - 2.4GHz:
 - 11g 54M: -77dBm, 11n HT20: -73dBm, 11ac HT40: -71dBm
- Wireless Function: Enable/Disable Wireless Radio, WDS Bridge, WMM, Wireless Statistics
- Wireless Security: Enable/Disable SSID Broadcast, 64/128-bit WEP, WPA/WPA2, WPA-PSK/WPA-PSK2 encryptions, QSS

Specifications

Software

- Quality of Service: WMM, Bandwidth Control
- WAN Type: Dynamic IP, Static IP, PPPoE, PPTP(Dual Access), L2TP(Dual Access), Bigpond
- Management: Access Control, Local Management, Remote Management
- DHCP: Server, DHCP Client List, Address Reservation
- Port Forwarding: Virtual Server, Port Triggering, UPnP, DMZ
- Dynamic DNS: DynDns, NO-IP, TP-Link
- VPN Server: PPTP, Open VPN
- Access Control: Parental Control, Local Management Control, Blacklist, Whitelist
- Firewall Security: DoS, SPI Firewall, IP and MAC Address Binding
- Protocols: IPv4, IPv6
- USB Sharing: Supports Samba(Storage), FTP Server, Media Server, Printer Server
- Guest Network: 2.4GHz guest network x 1, 5GHz guest network x 1

Others

- Certification:
CE, FCC, RoHS
- System Requirements:
Microsoft Windows 98SE/NT/2000/XP/Vista™/7/8/8.1/10, MAC OS, NetWare, UNIX or Linux
Internet Explorer 11, Firefox 12.0, Chrome 20.0, Safari 4.0, or other Java-enabled browser
Cable or DSL Modem
Subscription with an internet service provider (for internet access)
- Environment:
Operating Temperature: 0°C~40°C (32°F ~104°F)
Storage Temperature: -40°C~70°C (-40°F ~158°F)
Operating Humidity: 10%~90% non-condensing
Storage Humidity: 5%~90% non-condensing
- Package Contents
AC1350 Wireless Dual Band Router Archer C59
Power Adapter
RJ45 Ethernet Cable
Quick Installation Guide



For more information, please visit

<http://www.tp-link.com/en/products/details/Archer-C59.html>

or scan the QR code left

Attention: This device may only be used indoors in all EU member states and EFTA countries.

Specifications are subject to change without notice. TP-Link is a registered trademark of TP-Link Technologies Co., Ltd. Other brands and product names are trademarks or registered trademarks of their respective holders. Copyright ©2017 TP-Link Technologies Co., Ltd. All rights reserved.

TP-Link Technologies Co., Ltd.

Building 24 (floors 1, 3, 4, 5) and 28 (floors 1-4) Central Science and Technology Park, Shennan Rd, Nanshan, Shenzhen, China

www.tp-link.com

www.tp-link.com

TP-Link AC1350 Wireless Dual Band Router Archer C59